

State of Wyoming Corner Record

(In compliance with the *CORNER PERPETUATION AND FILING ACT*, Wyoming Statutes, 1997 Section 33-29-140 et. se., and the Rules and Regulations of the Board of Professional Engineers and Professional Land Surveyors)

Reverse side of this form may be used if more space is needed.

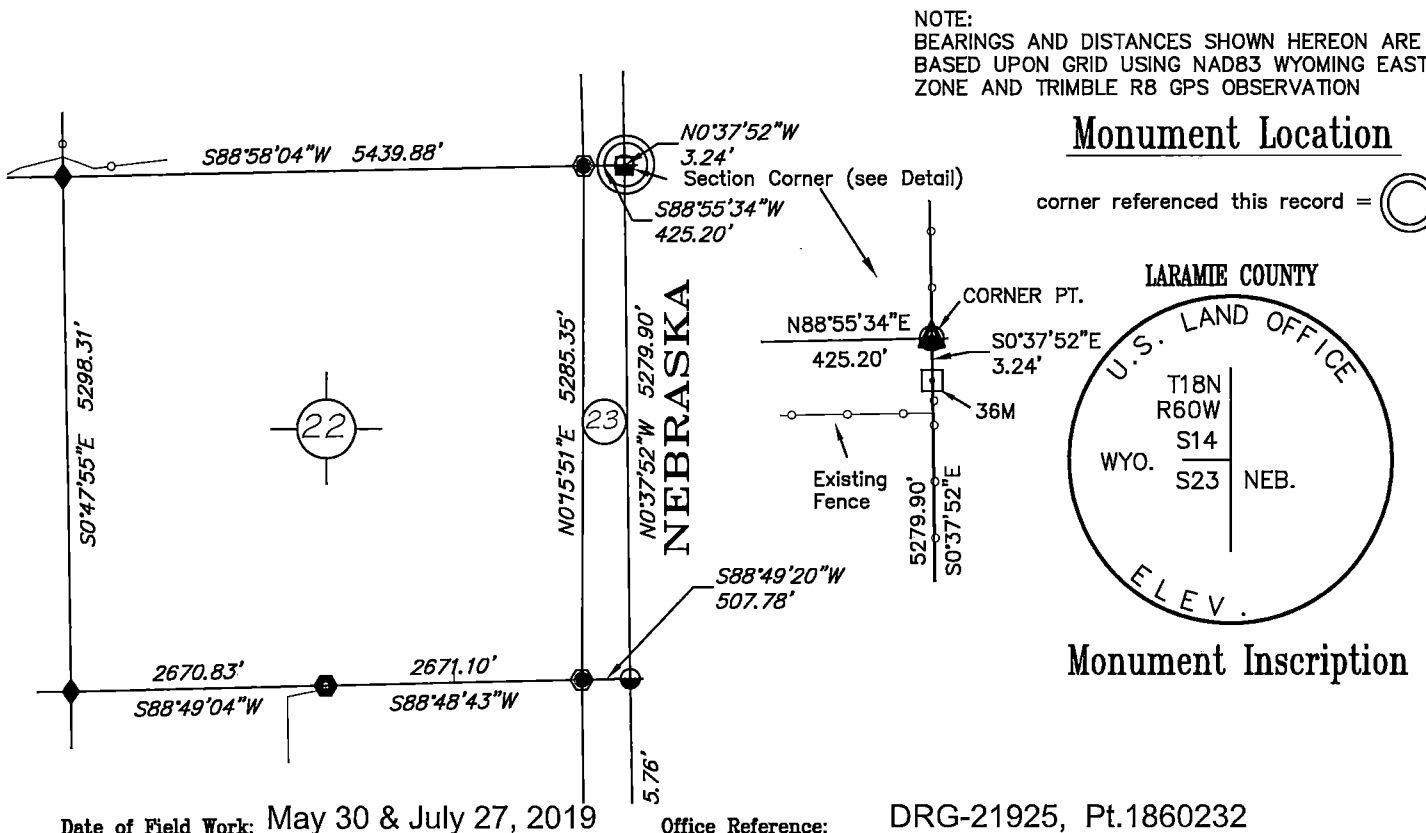
Record of original survey and citation of source of historical information (if corner is lost or obliterated). Description of corner monumentation evidence found and/or monument and accessories established to perpetuate the location of this corner. Sketch of relative location of monument, accessories, and reference points with course and distance to adjacent corner(s) (if determined in this survey). Method and rationale for re-establishment of lost or obliterated corner.

RECORD: U.S. LAND OFFICE survey by Edward F. Stahle from May to June 1908
 0.05 chs; a closing cor. of secs. 14 and 23, a lime stone 14x6x10 ins. above ground, and set iron post 3ft. long, 2.75 ins. dia., 26 ins. in the ground, surmounted by brass cap, marked T.19 N., R. 60 W., S.14 on N.W.; S.23 on S.W.; WYO on W.; NEB on E."

FOUND: 3.2 inch brass cap on 2.75 inch iron post, cap is 0.9 inches above ground at north-south fence. A 10 inch square granite Wyoming/Nebraska mile post marker, number 36 is 3.2 feet south. A north-south-west fence corner is 5.8 ft. south.

Re-monumentation: nothing required

	Point #	North	East	Elev.
NAD83, position:	1860232	373511.67	961280.14	5283.25



Cross Index Plat

1	2	3	4	5	6	7	8	9	10	11	12	13	14	15	16	17	18	19	20	21	22	23	24	25	
A	+	+	+	+	+	+	+	+	+	+	+	+	+	+	+	+	+	+	+	+	+	+	+	+	A
B	+	6	+	+	5	+	+	+	+	4	+	+	+	+	3	+	+	+	+	+	2	+	+	+	B
C	+	+	+	+	+	+	+	+	+	+	+	+	+	+	+	+	+	+	+	+	+	+	+	+	C
D	+	+	+	+	+	+	+	+	+	+	+	+	+	+	+	+	+	+	+	+	+	+	+	+	D
E	+	+	+	+	+	+	+	+	+	+	+	+	+	+	+	+	+	+	+	+	+	+	+	+	E
F	+	+	+	+	+	+	+	+	+	+	+	+	+	+	+	+	+	+	+	+	+	+	+	+	F
G	+	7	+	+	8	+	+	9	+	+	+	+	+	10	+	+	+	+	+	+	11	+	+	+	G
H	+	+	+	+	+	+	+	+	+	+	+	+	+	+	+	+	+	+	+	+	+	+	+	+	H
J	+	+	+	+	+	+	+	+	+	+	+	+	+	+	+	+	+	+	+	+	+	+	+	+	J
K	+	+	+	+	+	+	+	+	+	+	+	+	+	+	+	+	+	+	+	+	+	+	+	+	K
L	+	18	+	+	17	+	+	16	+	+	+	+	+	15	+	+	+	+	+	+	14	+	+	+	L
M	+	+	+	+	+	+	+	+	+	+	+	+	+	+	+	+	+	+	+	+	+	+	+	+	M
N	+	+	+	+	+	+	+	+	+	+	+	+	+	+	+	+	+	+	+	+	+	+	+	+	N
O	+	+	+	+	+	+	+	+	+	+	+	+	+	+	+	+	+	+	+	+	+	+	+	+	O
P	+	19	+	+	20	+	+	21	+	+	+	+	+	22	+	+	+	+	+	+	23	+	+	+	P
Q	+	+	+	+	+	+	+	+	+	+	+	+	+	+	+	+	+	+	+	+	+	+	+	+	Q
R	+	+	+	+	+	+	+	+	+	+	+	+	+	+	+	+	+	+	+	+	+	+	+	+	R
S	+	+	+	+	+	+	+	+	+	+	+	+	+	+	+	+	+	+	+	+	+	+	+	+	S
T	+	30	+	+	29	+	+	28	+	+	+	+	+	27	+	+	+	+	+	+	26	+	+	+	T
U	+	+	+	+	+	+	+	+	+	+	+	+	+	+	+	+	+	+	+	+	+	+	+	+	U
V	+	+	+	+	+	+	+	+	+	+	+	+	+	+	+	+	+	+	+	+	+	+	+	+	V
W	+	+	+	+	+	+	+	+	+	+	+	+	+	+	+	+	+	+	+	+	+	+	+	+	W
X	+	31	+	+	32	+	+	33	+	+	+	+	+	34	+	+	+	+	+	+	35	+	+	+	X
Y	+	+	+	+	+	+	+	+	+	+	+	+	+	+	+	+	+	+	+	+	+	+	+	+	Y
Z	+	+	+	+	+	+	+	+	+	+	+	+	+	+	+	+	+	+	+	+	+	+	+	+	Z

Firm/Agency, Address
 this corner record provided by:
HAMILTON LAND SURVEYING
 UNDER CONTRACT TO:
DRG RIFFIN & ASSOCIATES, INC.
 1414 ELK ST., SUITE 202
 ROCK SPRINGS, WY 82901
 (307) 362-5028

This corner record was prepared by me or under my direction and supervision.
 SEAL & SIGNATURE

 Date: 8/31/2019

RECP #: 761796
 RECORDED 9/18/2019 AT 1:44 PM BK# 2638 PG# 1478
 Debra K. Lee, CLERK OF LARAMIE COUNTY, WY PAGE 1 OF 1

Debra Lee _____ Deputy
 County Clerk

STATE of WYOMING, Office of Clerk & Recorder, County of Laramie
 this block provided for county filing documentation

Corner Name: Northeast , Section: 23 , T 18N , R 60W , 6th P.M. , Cross-Index No.: N 17-18
 SBRPEPLS/PLSW: March 1994; PLSW January 1998 County: LARAMIE , Wyoming